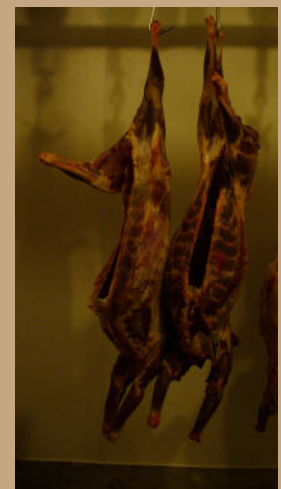


SPiRiT OF  
HUMANE

# Mobile Slaughter Unit

This unit is designed for custom slaughter of sheep and goats. The pilot model is build to meet USDA facility standards.



Goat carcasses in 4" x 8" cooler (shown through open door at left. )

Moses J Moses, LLC  
823 Main Street  
Boyceville, WI 54734

Email: [lwjacoby@hughes.net](mailto:lwjacoby@hughes.net)  
Phone: (715) 265-7637  
[www.spiritofhumane.com](http://www.spiritofhumane.com)

# Upright Restraint For Humane Slaughter



**Animal remains calm, comfortable and curious throughout process.**



**Position head so the neck is taut. Thumb is inserted in gap in teeth.**



## **Custom Knife for halal and live slaughter:**

- Straight, stainless steel blade
- Full tang for strength and durability



**SPIRIT OF  
HUMANE**

**Restraints  
for halal,  
kosher and  
general hand  
slaughter.**

**Designed for  
small scale  
custom and low  
volume state  
and federally  
inspected  
facilities.**



**Our products meet modern animal welfare requirements as established by Dr. Temple Grandin, Professor of Animal Sciences, Colorado State University and the world's expert on animal welfare friendly restraint and handling systems ([www.grandin.com](http://www.grandin.com)).**